

# comercio exterior

importaciones por producto [ton]

may 2016



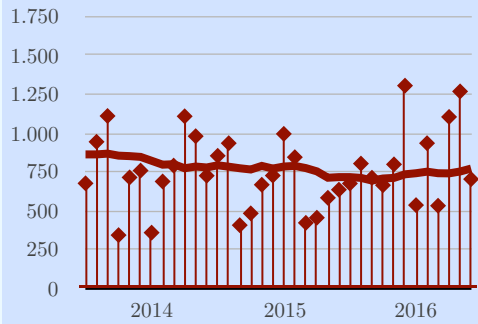
| producto   | 2015         |              |              |              |              |              |              | 2016         |              |              |              |              | tendencia    |              |          |
|--|--------------|--------------|--------------|--------------|--------------|--------------|--------------|--------------|--------------|--------------|--------------|--------------|--------------|--------------|----------|
|  | jun          | jul          | ago          | sep          | oct          | nov          | dic          | ene          | feb          | mar          | abr          | may          | prom 2015    | prom 2016    | signo    |
| aluminio primario                                | 675          | 803          | 712          | 664          | 798          | 1.304        | 536          | 934          | 532          | 1.103        | 1.267        | 1.247        | 703          | 1.017        | ▲        |
| scrap  | 796          | 556          | 36           | 164          | 939          | 877          | 558          | 358          | 434          | 227          | 170          | 211          | 476          | 280          | ▼        |
| chapas y rollos                                  | 1.515        | 1.570        | 1.676        | 1.505        | 1.452        | 1.909        | 1.967        | 1.669        | 1.843        | 1.835        | 1.691        | 2.038        | 1.580        | 1.815        | ▲        |
| <i>laminados estándar</i>                        | 64           | 60           | 171          | 145          | 184          | 193          | 312          | 234          | 438          | 259          | 380          | 223          | 150          | 307          | ▲        |
| <i>chapas para latas</i>                         | 457          | 500          | 732          | 497          | 569          | 914          | 603          | 438          | 745          | 634          | 602          | 1.024        | 564          | 689          | ▲        |
| <i>tejos</i>                                     | 0            | 0            | 0            | 0            | 0            | 0            | 0            | 0            | 0            | 0            | 0            | 0            | 43           | 0            | ▼        |
| <i>pomos</i>                                     | 44           | 39           | 47           | 44           | 45           | 70           | 50           | 47           | 28           | 21           | 20           | 50           | 44           | 33           | ▼        |
| <i>menaje</i>                                    | 181          | 233          | 213          | 192          | 252          | 151          | 282          | 145          | 221          | 278          | 242          | 242          | 178          | 225          | ▲        |
| <i>otros</i>                                     | 769          | 738          | 513          | 627          | 402          | 581          | 720          | 805          | 411          | 643          | 447          | 499          | 601          | 561          | ▼        |
| chapas finas y foil                              | 938          | 1.278        | 1.047        | 871          | 1.015        | 857          | 1.077        | 751          | 867          | 976          | 905          | 1.217        | 950          | 943          | ▼        |
| <i>foil estándar</i>                             | 174          | 192          | 219          | 144          | 216          | 241          | 244          | 108          | 144          | 260          | 156          | 206          | 195          | 175          | ▼        |
| <i>foil impreso ó c/soporte</i>                  | 376          | 593          | 381          | 333          | 418          | 275          | 296          | 258          | 384          | 338          | 393          | 512          | 355          | 377          | ▲        |
| <i>otros</i>                                     | 388          | 493          | 447          | 394          | 381          | 341          | 537          | 385          | 339          | 378          | 356          | 499          | 400          | 391          | ▼        |
| extruidos  | 681          | 731          | 599          | 668          | 1.099        | 461          | 1.118        | 681          | 639          | 956          | 665          | 719          | 682          | 732          | ▲        |
| <i>perfiles</i>                                  | 402          | 293          | 339          | 349          | 663          | 186          | 760          | 390          | 383          | 590          | 321          | 291          | 344          | 395          | ▲        |
| <i>tubos</i>                                     | 231          | 342          | 201          | 239          | 246          | 218          | 237          | 189          | 193          | 270          | 194          | 258          | 233          | 221          | ▼        |
| <i>otros</i>                                     | 48           | 96           | 59           | 80           | 190          | 57           | 121          | 102          | 63           | 96           | 150          | 170          | 105          | 116          | ▼        |
| alambrón y cables                                | 52           | 57           | 86           | 91           | 37           | 67           | 68           | 77           | 19           | 84           | 33           | 87           | 69           | 60           | ▼        |
| <i>cables eléctricos</i>                         | 0            | 0            | 0            | 20           | 0            | 0            | 0            | 0            | 0            | 0            | 0            | 0            | 2            | 0            | ▼        |
| <i>otros</i>                                     | 52           | 57           | 86           | 71           | 37           | 67           | 68           | 77           | 19           | 84           | 33           | 87           | 67           | 60           | ▼        |
| fundidos   | 2.722        | 4.387        | 3.267        | 3.185        | 3.127        | 3.956        | 2.817        | 1.864        | 2.766        | 2.763        | 3.480        | 3.044        | 3.060        | 2.783        | ▼        |
| <i>llantas</i>                                   | 2.622        | 2.616        | 2.889        | 3.086        | 2.774        | 2.842        | 2.484        | 1.332        | 2.170        | 2.723        | 2.627        | 2.815        | 2.535        | 2.333        | ▼        |
| <i>otros</i>                                     | 100          | 1.771        | 378          | 99           | 353          | 1.114        | 333          | 532          | 596          | 40           | 853          | 229          | 525          | 450          | ▼        |
| otros productos                                  | 384          | 414          | 379          | 318          | 431          | 341          | 606          | 424          | 343          | 356          | 220          | 290          | 364          | 327          | ▼        |
| <b>total importaciones capítulo 76 + llantas</b> | <b>7.763</b> | <b>9.796</b> | <b>7.802</b> | <b>7.466</b> | <b>8.898</b> | <b>9.772</b> | <b>8.747</b> | <b>6.758</b> | <b>7.443</b> | <b>8.300</b> | <b>8.431</b> | <b>8.853</b> | <b>7.884</b> | <b>7.957</b> | <b>▲</b> |

# comercio exterior

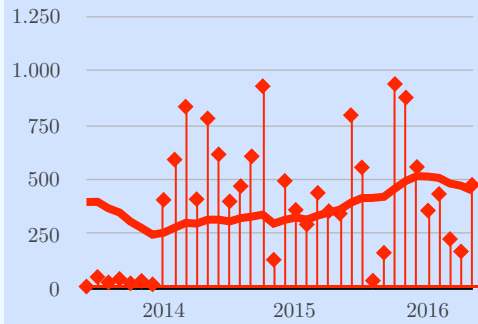
importaciones por producto (evolución 36 meses) [ton]



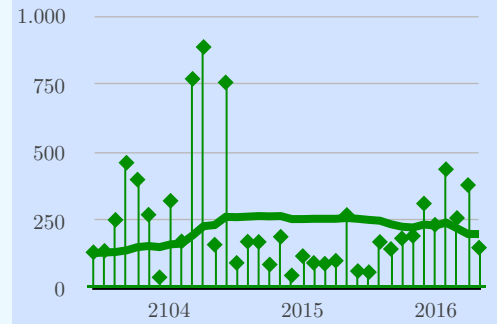
aluminio primario



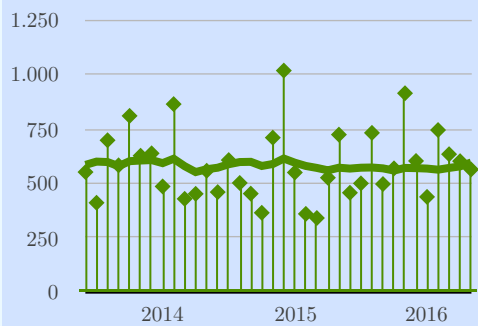
scrap



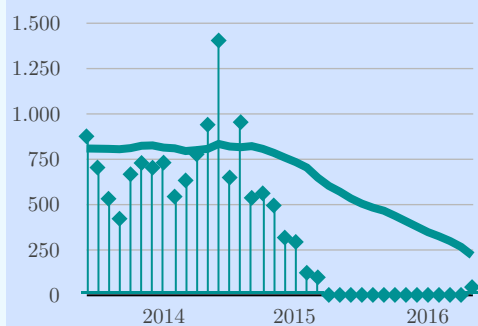
laminados estándar



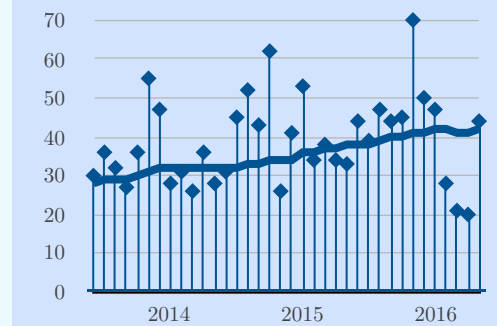
chapas para latas



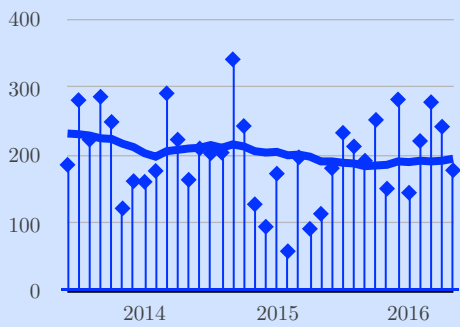
tejos



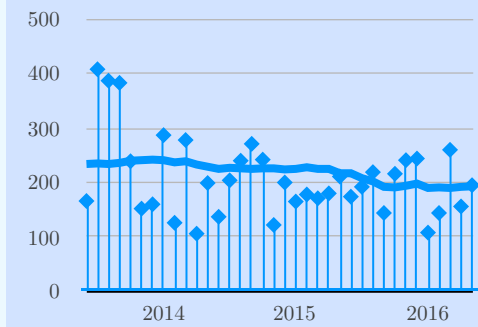
pomos



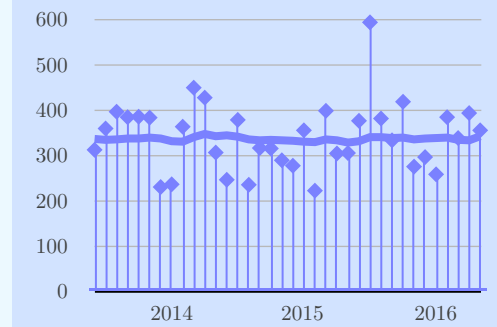
menaje



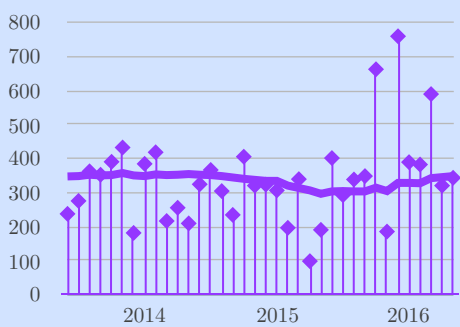
foil estándar



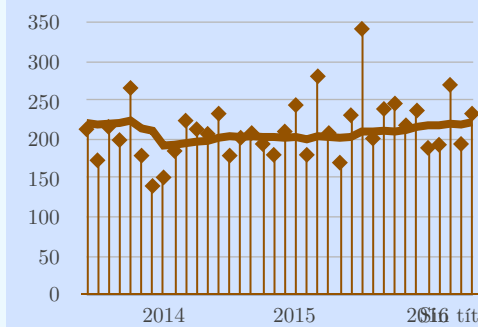
foil impreso/con soporte



perfiles



tubos



llantas

